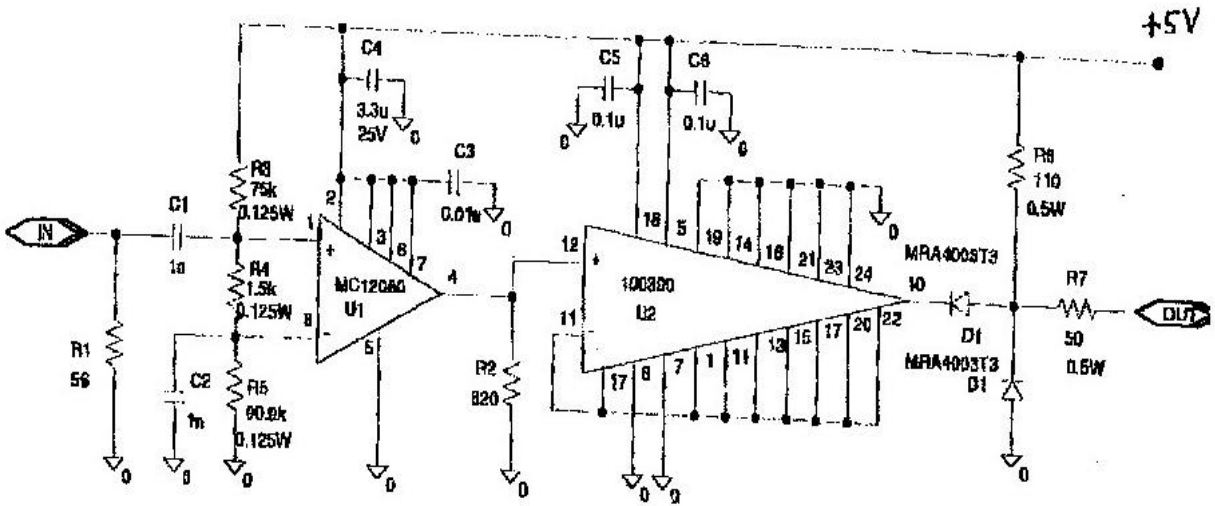


**Notes:**

- 1) RF Connectors are SMA Female. Case material is Aluminum, finish on body is blue paint per Federal Standard 595 # 25109. Mounting flange is anodized aluminum. Unit is not hermetic but is environmentally sealed using ablefilm 550-k-001. All internal electronics are conformally coated with Conap CE-1155 in accordance with MIL-I-46058C, type UR.
- 2) RF function is Frequency divider, divide by 10. VSWR is 1.5:1 max over the operating frequency range of 240 to 600 MHz (on input). Input power level is 0 dBm to -15 dBm, RF sine wave.
- 3) The module generates a TTL level voltage at its output when the output port is terminated in 50 ohms.
- 4) Unit is unconditionally stable under any input condition. Input comparator is set to a stable point, internally, with a 75k pull-up to +5V on the noninverting input, a 91K pull-down on the inverting input, and a 1.5K resistor between the inverting and noninverting inputs. Parts derating is in accordance with Raytheon derating spec GP&P 42-1007-210.
- 5) Supply voltage is +5V @ 100 mA max.
- 6) Operating temperature range is 15 C to 50 C.
- 7) Circuit schematic per Figure 1.

| Tolerances<br>Except as Noted<br>.x = +/- .05<br>.xx = +/- .03<br>.xxx = +/- .010<br>Dimensions<br>in inches | Revisions |          |           |            | <b>Impellimax</b> |                |                              |
|--|-----------|----------|-----------|------------|-------------------|----------------|------------------------------|
|  |           | E        | ECO 2092  | 10/31/2000 | P.C.              | <b>OUTLINE</b> |                              |
|  | F         | ECO 2095 | 11/8/2000 | P.C.       |                   |                |                              |
|  | G         | ECO 2146 | 3/21/2001 | P.C.       | Not to Scale      |                | Sheet 1 of 2                 |
| Information herein is<br>believed accurate.<br>Suitability not<br>guaranteed.                                | H         | ECO 2269 | 8/19/2002 | P.C.       | Drawn By: PC      | Date: 4/14/00  | <b>Drawing #<br/>5501-50</b> |
|  | H         | ECO 2270 | 8/20/2002 | P.C.       | DRF: 456          | Approved: PC   |                              |

Figure 1



| <p>Tolerances<br/>Except as Noted<br/>.x = +/- .05<br/>.xx = +/- .03<br/>.xxx = +/- .010<br/>Dimensions<br/>in inches</p> <p>Information herein is<br/>believed accurate.<br/>Suitability not<br/>guaranteed.</p> | Revisions |           |            |          | <b>Impellimax</b> |               |
|---|-----------|-----------|------------|----------|-------------------|---------------|
|   | E         | ECO 2092  | 10/31/2000 | P.C.     | <b>OUTLINE</b>    |               |
|   | F         | ECO 2095  | 11/8/2000  | P.C.     |                   |               |
|   | G         | ECO 2146  | 3/21/2001  | P.C.     | Not to Scale      | Sheet 2 of 2  |
|   | H         | ECO 2269  | 8/19/2002  | P.C.     | Drawn By: PC      | Date: 4/14/00 |
| H   | ECO 2270  | 8/20/2002 | P.C.       | DRF: 456 | Approved: PC      |               |